



# APEKS



## Copyright Notice

This owner's manual is copyrighted, all rights reserved. It may not, in whole or in part, be copied, photocopied, reproduced, translated or reduced to any electronic medium or machine readable form without prior consent in writing from Apeks.

©2025 Apeks

Regulator Owner's Manual

Please read the instructions in this manual carefully before using your regulator.

## Warnings, Cautions and Notes

Pay special attention to information provided in warnings, cautions and notes, that is accompanied by these symbols:



**A WARNING:** Indicates a procedure or situation that, if not avoided, could result in serious injury or death to the user.



**A CAUTION!** Indicates any situation or technique that could cause damage to the product, and could subsequently result in injury to the user.



**A NOTE:** Is used to emphasise important points, tips, and reminders.

Manufacturer:	EU Importer:	UK Importer:
Apeks Marine Equipment Ltd, Neptune Way, Blackburn, Lancashire, United Kingdom, BB1 2BT.	Aqua Lung Trading (Aqua Lung Logistics), 1ère avenue 14ème rue BP 148 06513 Carros Cedex (France). MADE IN THE UK	Aqualung UK Distribution, Neptune Way, Blackburn, Lancashire, England. BB1 2BT.
"An Aqualung Company"		



**NOTE:** For details of products covered by this manual please refer to the tables at the rear of this manual.



## CONTENTS

<b>General Precautions &amp; Warnings</b> .....	4
<b>Introduction</b> .....	6
Risk Identification.....	6
European Notified Bodies.....	6
UK Approved Bodies.....	7
Type Examinaton.....	7
<b>Overview of Features</b> .....	9
Second Stage Hose Configuration.....	9
Diver Changeable Exhaust System (DCE).....	10-11
External Second Stage Adjustments.....	12
Integrated Venturi Switch.....	12
Inhalation Resistance Control Knob.....	13
Auto Closure Device.....	14
No Diver Controls.....	15
Egress Second Stage.....	15
<b>Warranty Restriction</b> .....	15
<b>First Stage Environmental Protection</b> .....	16
<b>Second Stage Cold Water Protection</b> .....	16
<b>Auxilliary Emergency Breathing Systems</b> .....	17-18
<b>Preparation and Setup</b> .....	19
Hose Attachment.....	19
Hose Fitting Operation For all First Stages.....	19
Attaching the First Stage to the Cylinder Valve (Yoke).....	20-21
Attaching the First Stage to the Cylinder Valve (DIN).....	22-23
DIN to Yoke Converter.....	23
<b>Diving with Your Regulator</b> .....	24
Pre-Dive Inspection Checklist.....	24
During the Dive.....	25
Diving In Cold Water.....	26-27



<b>After the Dive</b> .....	28
Removal of the Regulator from the Cylinder Valve (YOKE).....	28
Removal of the Regulator from the Cylinder Valve (DIN).....	28
Care & Maintenance.....	29-31
Dealer Service & Repair.....	31
<b>Hose Maintenance</b> .....	32
Cleaning The Swivel Joint.....	32
Removal of The Swivel Joint.....	33
Removal of Standard Medium Pressure Hoses.....	34
Fitting of The Swivel Joint.....	35
Fitting of Standard Medium Pressure Hoses.....	36
<b>Warranty Information</b> .....	37
Limited Lifetime Warranty.....	37
Returning Your Regulator For Service.....	38
Markings and Abbreviations.....	39
<b>Annex A: Enriched Air Nitrox Use (EAN)</b> .....	40
Enriched Air Nitrox Use – Inside EEC (European Economic Community) countries.....	
EN 144-3 and EN13949.....	40
Enriched Air Nitrox Use – Outside EEC (European Economic Community) Countries..	41
<b>Annex B: Products Covered by this Manual</b> .....	43-49
<b>Notes</b> .....	50-52
<b>Regulator Service Record</b> .....	53-54



## General Precautions & Warnings



**WARNING:** *This manual provides essential instructions for the proper setup, inspection, use, and care of your new regulator. Because Apeks regulators utilise patented technology, it is very important to take the time to read these instructions in order to understand and fully enjoy the features that are unique to your specific model. Improper use of your regulator could result in serious injury or death.*

- Before using this regulator, you must receive instruction and certification in SCUBA diving from a recognised training agency. Use of SCUBA equipment by uncertified or untrained persons is dangerous and can result in injury or death.
- This regulator is not configured for commercial use with surface supplied air.
- Always pressurize the regulator gradually by opening the cylinder valve **SLOWLY**.
- Unless instructed, **NEVER** apply any type of lubricant to any part of the regulator or cylinder valve.
- **DO NOT** apply any type of aerosol spray to the regulator. Doing so may cause permanent damage to certain plastic components, including the second stage housing.
- Factory prescribed service for this regulator must be performed at least once annually by a factory trained Apeks service technician who is employed by an authorised dealer. Disassembly, repair, or first stage adjustment must not be attempted by persons who are not factory trained and authorised by Apeks.
- **DO NOT** leave a cylinder standing unsecured with the regulator attached to the valve. Doing so may cause permanent damage to the regulator and cylinder valve if the cylinder falls over.
- **DO NOT** carry SCUBA equipment by the first stage when it is connected to a cylinder. Always carry the cylinder by the cylinder valve or an attached carrying device.
- When diving in cold water (below 10°C, or 50°F), you must have received training and certification in the techniques of cold water diving from a recognised training agency. Correct Selection of specific cold water



equipment is required. Any equipment marked with the greater than 10° Celsius symbol; (> 10°C) is only suitable for water temperatures above 10°C or 50°F.

- When configuring your regulator for use with emergency auxiliary Breathing systems (Octopus), the correct selection of equipment is required. Any equipment marked with EN250A is suitable for use with an octopus.



## Introduction

Congratulations and thank you for choosing Apeks. All Apeks regulators have been designed and manufactured with pride, according to standards which meet or surpass the requirements of the BS EN ISO 9001:2015 quality management system.

Your Apeks regulator is covered by Apeks' Limited Lifetime Warranty against defects in materials or workmanship. This warranty is only extended to the original purchaser, and is not transferable. For more information, be sure to read the warranty section of this manual, and remember to save your sales receipts. Copies of these receipts must be presented whenever obtaining warranty service.

Perhaps more than any other piece of diving equipment you will own, your regulator's function and performance relies greatly on the care and maintenance it will receive, in addition to regularly scheduled dealer service. Before you dive with your new Apeks regulator, it is therefore important to read this manual in its entirety to become familiar with its features, as well as the correct procedures for setup, pre-dive inspection, and post-dive maintenance.

Please read on to learn how you can obtain the maximum enjoyment from your regulator, and maintain its like-new performance for many years to come.

## Risk Identification

The products outlined in this document are intended to protect divers against the risk of drowning by providing the diver with a breathable gas mixture in an underwater environment.

## CE European Notified Bodies

Apeks Regulators have been tested in accordance with PPE regulation (EU) 2016/425, and BS EN 250A.

They are type approved by:

SGS Fimko Oy, Takomotie 8, FI-00380 Helsinki, Finland, Notified Body Number 0598.



## UKCA: UK Approved Bodies

Apeks Regulators have been tested in accordance with Regulation 2016/425 and the Personal Protective Equipment (Enforcement) Regulations 2018: Great Britain by:

Approved body SGS United Kingdom Ltd, Inward Way, Rossmore Business Park, Ellesmere Port, Cheshire, CH65 3EN, United Kingdom approved body 0120.

**Conformity To Type Based on Quality Assurance of The Production Process (Module D) was carried out under the surveillance of the Notified / Approved body:**

**CE:** BSI group, The Netherlands B.V. Say Building, John M. Keynesplein 9, 1066 EP Amsterdam, The Netherlands. Notified body Number 2797

**UKCA:** BSI UK Kitemark Court, Davy Avenue, Knowhill, Milton Keynes, MK5 8PP United Kingdom. Approved Body Number 0086.

The ISO 12209:2013 screw connection is known informally as a "DIN". All Apeks "DIN" Connections comply to ISO 12209:2013. From this point any reference to DIN shall be seen as a practical simplification in representation of ISO 12209:2013.

If an Apeks regulator is configured for and used by more than one diver at the same time, then it shall not be used at depths greater than 30 m and in water temperatures less than 4 °C.

If an MTX regulator is configured for and used by more than one diver at the same time, then it shall not be used at depths greater than 50 m and in water temperatures less than 4 °C.



**NOTE:** "NOTE: All Apeks Demand Regulators with Octopus have been tested and certified in accordance with EN250:2014 and EN250:2014 Annex B;

Apeks Auxiliary Emergency Breathing Systems are rated to a depth of 50 meters. Egress demand regulators are rated as Auxiliary Emergency Breathing Systems to a depth of 30 m.



All Apeks Demand Regulators are for use in cold water conditions below 10°C or 50°F, unless the product is marked with «>10°C» where it can only be used in water temperatures above 10°C or 50°F. See also sections 3.1 & 3.3.



**NOTE:** This PPE is in accordance with the essential health and safety requirements as described by Annex II of the regulation (EU) 2016/425.

**\*EN250:2014** *Respiratory equipment – Open Circuit Self Contained Compressed Air Diving Apparatus – Requirements, Testing and Marking* is a European normative standard published in 2014.

The purpose of this European Standard is to ensure a minimum level of safe operation for apparatus down to a maximum depth of 50 metres (164ft) at 10°C (50°F). Apeks regulators have been tested beyond and far exceed this requirement.



**WARNING:** *Improper use or misuse of SCUBA equipment may result in serious injury or death. Read and understand this owner's manual completely before diving with your Apeks regulator.*



## Overview Of Features

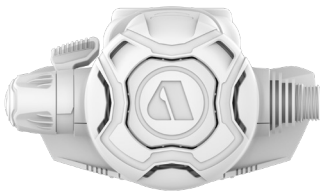
The Apeks family of regulators consists of different models which satisfy a wide range of diving interests; from entry level sport diving, to advanced diving in more demanding and extreme conditions. By now, your authorised dealer has already explained to you the specific features that your particular model offers, and you have made your purchase after comparing the benefits of these features to your personal diving needs and interests. Be sure to review this section to learn more about your model's features and how to obtain the maximum benefit from using them. The XTX, EVX and MTX-R ranges offer two unique features. The option for either left or right hand hose configuration and the Diver Changeable Exhaust system (DCE). In addition, the EVX incorporates the Auto Closure Device (ACD).

## Second Stage Hose Configuration

Apeks XTX, EVX and MTX-R regulator ranges can be dedicated to either left or right handed use in conjunction with the Reversible Venturi System (RVS, see page 13). The hose routing can be altered from right hand to left or from left hand to right by your Authorised Apeks Dealer. This is an extremely useful feature offering much greater flexibility for personal kit configuration.



Right Hand



Left Hand



**NOTE:** This conversion must only be performed by a factory trained Authorised Apeks Service Technician who is employed by an Authorised Dealer. Contact your Authorised Apeks Dealer for further information on this feature. Disassembly, adjustment or repair must not be attempted by persons who are not factory trained and authorised by Apeks.



## Diver Changeable Exhaust system (DCE)

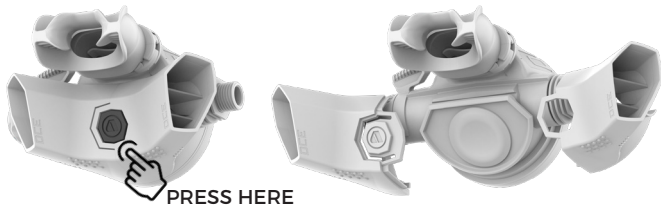
The Diver Changeable Exhaust (DCE) offers the choice of either a compact lightweight system or a longer exhaust diffuser. DCE can be configured to prevent virtually any bubble interference from obscuring the diver's view.

The exhaust diffusers can be easily and very quickly changed by sliding and locking the preferred set into place. Divers can now configure their own regulator exhaust diffusers for individual dive conditions or requirements.

By pressing the securing button in the centre of the exhaust diffuser and at the same time sliding the diffusers apart, they can be removed quickly and easily. Ensure that the venturi lever is pointing vertically before removing.

To attach an alternative set of exhaust diffusers, align the slide locations as shown and slide each side into place, taking care that the exhaust diffusers are located securely. When the two diffusers meet, squeeze them together until an audible "click" is heard from the retaining button.

1. First, gently press the button located in the centre of the exhaust diffuser.



2. Then slide both exhaust diffusers apart, whilst keeping the button depressed.



**CAUTION!** Do not use any tools to aid the removal of the exhaust diffusers.

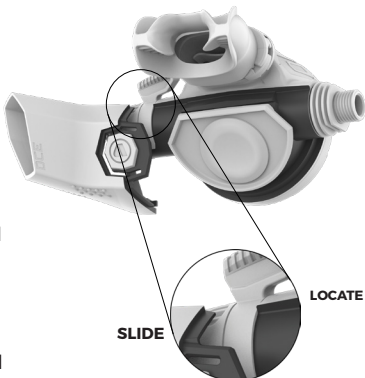


**CAUTION!** Ensure location grooves are free from dirt and debris.

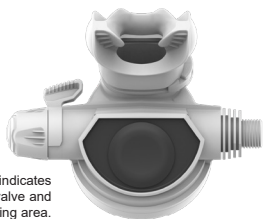
3. Refitting the exhaust diffusers is carried out by sliding ONE diffuser at a time onto the case, once both diffusers are located on the case, squeeze the two diffusers together until you hear an audible “click”.



**NOTE:** The removal and refitting of the small exhaust diffusers is carried out in exactly the same way as the large exhaust diffusers. If the exhaust diffusers do not securely clip together then they may become detached and lost. (If required, exhaust diffusers may be purchased separately).



Showing Compact Exhaust Option



Shaded area indicates exhaust valve and surrounding area.



**WARNING:** Do not attempt to use tools to remove or attach the exhaust diffusers. After the removal of the exhaust diffusers, care must be taken to prevent damage to the exhaust valve. Do not attempt to poke, pull or touch the exhaust valve or surrounding area with any tools. If damage to this part or surrounding area occurs then this could cause your regulator to leak, causing serious malfunction or even personal injury. Care must be taken when securing alternative sets of diffusers, do not apply excessive force as damage may occur to the diffusers, exhaust valve or surrounding area.



## External Second Stage Adjustments

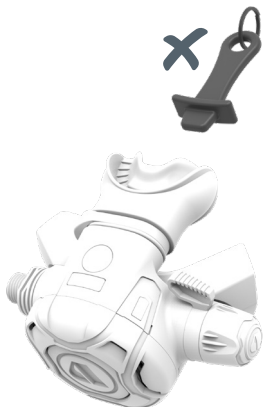
External adjustment features offer many advantages, including the ability to adjust your second stage regulator's sensitivity as your diving conditions change. This allows you to maintain peak performance throughout every dive, or to desensitise your regulator's opening effort at times when you are not breathing from it.

## Integrated Venturi Switch

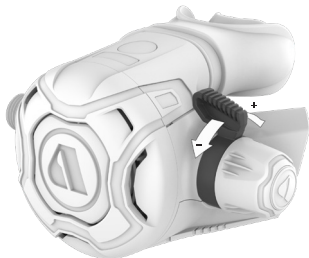
Some second stages are equipped with a diver controllable venturi system. This system is known as the Integrated Venturi System (IVS) or Reversible Venturi System (RVS) and is included on the XTX, EVX and variants of the MTX-R range of second stage regulators. This switch allows the diver to control the venturi assist thereby reducing the sensitivity to free flow at the surface whilst the second stage is out of the mouth. Whilst diving the switch provides maximum airflow at depth.

Whilst diving and with the second stage in your mouth, set the switch to plus (+) to achieve maximum venturi assistance for easier breathing.

To prevent the second stage from free-flowing, however, you should set the IVS/RVS to the MIN(-) setting during entry or while swimming on the surface.



**NOTE:** Egress and some MTX-R and MTX second stages do not include an integrated venturi Switch.



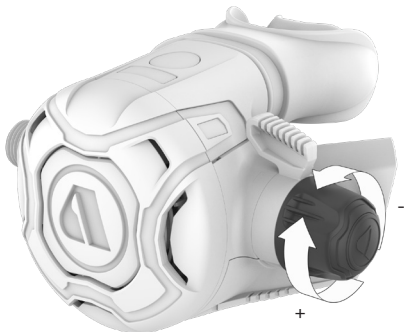
**CAUTION!** Do not use mouthpiece insertion type Octopus holders. The internal venturi deflector may become dislodged.



## Inhalation Resistance Control Knob

Some second stage models are equipped with an additional adjustment, which controls inhalation resistance.

This control knob, located beside the IVS/RVS switch, adjusts the amount of effort required to start the air flow at the beginning of the inhalation cycle. As it is turned "in" (clockwise), the opening effort will increase. This will make the second stage less sensitive to sudden changes in ambient pressure. Turning the knob "out" (anti-clockwise) will decrease the opening effort to make breathing easier.



This adjustment is particularly useful at deeper depths, or in variable conditions that affect the opening effort of the second stage, such as strong currents or while using a diver propulsion vehicle (DPV). You can use the inhalation control knob to tune your regulator to maintain its peak performance throughout the course of your dive, or you can leave it set in its mid-range position and dive with it as you would any non-adjustable second stage.



**NOTE:** + / - feature on 2nd stage case is only relevant to XTX / EVX / MTX products that feature IVS / RVS controls.



## **Auto Closure Device**

When the first stage is not connected to a cylinder valve, the ACD keeps the inlet shut to protect the first stage's internal parts from contamination and corrosive water. It preserves the internal lubrication and keeps the inlet filter clean and dry. The Auto Closure Device is available in both DIN 300bar and Yoke 232bar.



## No Diver Controls

Some Apeks second stage models have no diver controls, this is to increase the ease of use. These regulators have been pre-set by Apeks or an authorised service technician to reduce the effect of free-flowing when out of the mouth.

For more information on using these adjustments, refer to the section titled, 'Diving With Your Regulator', on page 25.



## Egress Second Stage

The Egress is a low profile second stage suitable for use in all diving conditions, and can be used either way up due to its side exhaust and hose layout. Therefore the diver can use the second stage with the hose routed from either the left or right depending on personal preference and setup requirements. The Egress second stage incorporates a pneumatically balanced valve system which is primarily aimed for use as an alternative air source second stage although can still be used successfully as a primary second stage. The Egress also incorporates the patented thermodynamic heat exchanger technology which makes it suitable for diving in water temperatures below 10°C, (50°F) see page 15.



## Warranty Restriction

The limited lifetime warranty period offered on Apeks regulators does not cover the electronic components of the Status regulators. Apeks offers a 24 month limited warranty related to these parts.

## First Stage Environmental Protection

For diving in contaminated or cold water conditions, some Apeks first stages feature a “DRY” environmental sealing system which completely eliminates the need for a silicone oil or grease filling. An external diaphragm seals the ambient chamber from the surrounding sea water, while a specially designed piston, transfers ambient water pressure to the internal diaphragm.

This helps to prevent ice from forming inside the ambient chamber, and also extends the life of the first stage internal diaphragm. It is important to remember, however, that this environmental protection will not completely prevent the second stage from icing or freezing.



## Second Stage Cold Water Protection

With the exception of the XTX20, AT20 & T20 and some Flight models, Apeks second stages incorporate a thermo-dynamic heat exchanger at the second stage hose fitting. This patented (Patent No. U.S. Pat. 5,265,596) feature is designed to draw in the surrounding water temperature, thereby warming the valve mechanism and greatly reducing the possibility of second stage freeze-up.

For important information about diving in cold water, refer to the section titled, ‘Diving in Cold Water’, on page 26.



## Auxiliary Emergency Breathing Systems

For safety reasons when using Self Contained Underwater Breathing Apparatus (SCUBA), it should always be recommended to use an appropriate alternative breathing air (gas) source/secondary life support system. This recommendation can vary depending on location and training agencies you have received your training from and you must follow how you have been trained. However, it is common practice within recreational diving and during some commercial diving to use an Auxiliary Emergency Breathing System also known as an Octopus or Alternative Air Source second stage, to fulfil or support this requirement.

An Octopus is a secondary demand valve, designed to work in conjunction with the primary demand valve and they are both connected to the first stage pressure reducer. The Octopus provides a backup demand valve in cases of primary demand valve failure and may also act as an Alternative Air Source (AAS) for the diving Buddy. An AAS does not require the Donor diver to remove their own primary demand valve when supplying gas to a Buddy diver who has experienced regulator failure or an out of gas situation.

By its very nature (other than during training exercises) this type of apparatus is only expected to be used during emergency situations and is therefore likely to experience very high ventilatory demand, as it is required to support two divers breathing at the same time.

SCUBA single demand regulators capable of meeting the breathing performance requirements of BS EN 250:2014 cannot be relied upon to meet the same performance requirements when used as part of an Octopus system. This is due to requiring twice the performance from the first stage pressure reducer in an already strenuous environment.

Reduced breathing performance of second stage demand valve systems may be experienced when using low performance first stage pressure reducers with poor performing and incompatible second stage demand valves.



As stated in the minimum safety requirements for such products EN250 Respiratory equipment – Open-circuit self-contained compressed air diving apparatus; 'if SCUBA is configured for and used by more than one diver at the same time, then it shall not be used at depths greater than 30m and in water temperatures less than 10°C'. Although these minimum requirements only require an Auxiliary Emergency Breathing System (Octopus) to be tested and restricted to 30 metres, (98ft) and 10°C (50°F), Apeks recognises that diving occurs beyond these limits and emergencies can happen. To ensure Apeks products perform well in all conditions in this type of situation, Apeks has designed, tested and has CE approval for our products to far exceed these minimum requirements. This means any Octopus will match the performance of the primary demand regulators they are intended to work with, in water temperatures below 10°C (50°F) where stated, and to depths of at least 50 metres (164ft).

As a user you can be confident that in an emergency or an out of gas situation, your regulator can cope with the extra demand of your buddy breathing from your Octopus and safely supply enough gas for you both in all conditions you may be faced with.



**WARNING:** *If Auxiliary Emergency Breathing Systems (Octopus) are to be used you must ensure that: The first stage selected is designed, tested and is CE marked for use with two second stages, suitable for use at varying water temperatures and depth. The equipment can, if required, be used as an escape device by more than one diver at the same time. Your equipment is maintained in accordance with manufacturers recommendations. Usually annually inspected and serviced. See section Dealer Service and Repair.*



**NOTE:** See section on Markings and Abbreviations, which explains how you can identify if your product is suitable for these conditions.



**WARNING:** *SCUBA regulators and equipment have operational limits when used with, Emergency Auxiliary Breathing Systems, Alternate Air sharing, Octopus and Buddy Breathing and increases the risk of serious injury or even death. You must ensure you understand these limitations and you have received the correct level of training and preparation of your equipment before you use Auxiliary Emergency Breathing Systems.*



## Preparation And Setup

### Hose Attachment

Apeks recommends that you take your regulator to your authorised dealer for the installation of any accessory items, including instrumentation, medium pressure (MP) quick disconnect hoses, and alternative air source second stages. Your dealer can also answer any questions you may have pertaining to the information in this manual. If it is not possible to return your regulator and accessories to your Apeks Authorised Dealer, you may install the accessories yourself carefully performing the steps in the following procedure.



**WARNING:** *The use of non-genuine aftermarket products can affect performance and test accreditation. Aftermarket products may not be compatible and may also have detrimental effect or cause damage to your regulator.*

### Hose fitting operation for All First Stages.



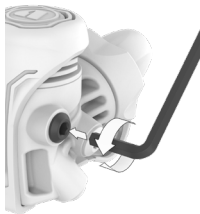
**WARNING:** *DO NOT connect medium pressure hoses (inflator hoses and second stage hoses) to high pressure (HP) ports. This will cause medium pressure hoses to burst when pressurised, which can result in serious injury. High pressure ports are identified by the letters 'HP' on your regulator and are mainly used for instrumentation and air integrated computers.*



**NOTE:** Care must be taken when using a spanner/wrench when tightening the hose connections. The spanner can score and damage the chrome plating finish of the first stage body around the port area.



**NOTE:** Medium pressure ports (MP) use a 3/8" UNF thread in accordance with EN250. High pressure ports (HP) use a 7/16" UNF thread. The number of HP and MP ports may vary depending on the model of first stage.



1. Remove the port blanking plug from your first stage regulator using a 5mm Allen key.

2. Ensure the O-Ring is present and in good condition on the hose to be fitted. Screw the threaded end of the hose into the port, making sure that the thread is screwed in square to the port. Tighten to 4-6Nm (44Lbs/in) using an appropriate spanner.





1. If fitted, check the second stage IVS/RVS control switch to ensure that it is set to the "MIN" (-) position prior to connecting your regulator to the cylinder. This ensures there is no inadvertent free flow when the cylinder valve is opened.
2. If present, gently turn the inhalation control knob "in" (clockwise), only until it stops. Do not apply excessive pressure.
3. If you are using a cylinder with a yoke connection valve, check the cylinder valve O-ring is fitted and not worn or damaged. If you are using a high pressure cylinder with a DIN connection valve, remove the protector cap from the first stage to inspect the sealing O-ring of the DIN connector. If the sealing O-ring is damaged or worn, replace it before mounting the regulator on the cylinder valve.



**CAUTION!** Use a small amount of an appropriate lubricant (such as Christo-Lube) LIGHTLY applied to the thread of the Din Hand Wheel periodically. This prevents seizing on the Cylinder Valve. **DO NOT OVER LUBRICATE** or apply to the internals of the handwheel or cylinder valve gas-way.

### Attaching the First Stage to a Cylinder Valve (Yoke Connection)



**WARNING: OPEN VALVES SLOWLY TO AVOID OVER-PRESSURISATION.** When pressurising your SCUBA system, be sure to open the cylinder valve slowly to minimise the generation of heat. Failure to do so, with Enriched Air Nitrox (EAN) present, increases the risk of combustion that can lead to serious injury or death.

It is considered safe practice, especially when using EAN, to open the cylinder valve slowly and let the first stage pressurise slowly. Rapid pressurisation causes adiabatic compression of the breathing gas, which generates heat inside the first stage. Heat, along with elevated percentages of oxygen and an ignition source (from contamination) are the ingredients that can cause combustion. This is why it is necessary to keep the interior of the regulator clean, along with the slow opening of the cylinder valve. For regulators over 21% oxygen please see pages 6, 7 and 8.



**To attach a yoke-style first stage to the cylinder valve, follow these steps:**

1. Partially unscrew the yoke screw of the first stage regulator so that the dust cap can be removed from the air inlet.
2. With the cylinder valve facing away from you, release a small amount of air from the cylinder by turning the hand-wheel anti-clockwise to open the valve slightly. When air is heard exiting, immediately close the valve. This will clear any moisture or debris that may be inside the cylinder valve outlet opening. Check the O-ring is still in place.
3. Place the first stage regulator over the cylinder valve so that the inlet fitting aligns with the O-ring of the cylinder valve, and the LP hose of the primary second stage will be routed over the desired shoulder. While holding the first stage in place, turn the yoke screw clockwise. Ensure that the yoke screw mates into the small dimple on the backside of the cylinder valve, and hand tighten only - do not over tighten.
4. If a submersible pressure gauge is attached to the first stage, ensure that the gauge is facing away from you. Pressurise the regulator by slowly turning the cylinder valve hand wheel anti-clockwise. Continue to turn the valve hand wheel anti-clockwise until it is fully open, and then turn it back 1/2 turn so that it turns easily.
5. Listen near the first stage to check for any leakage. If leakage is detected, immerse the first stage and cylinder valve in water while pressurised to determine the source.
6. If leakage has been detected, follow the procedure for removing the regulator from the cylinder valve on page 28. If air was leaking between the first stage and cylinder valve, replace or re-seat the cylinder valve O-ring as needed and repeat the above procedure. If leakage persists, return the system to an authorised dealer.



## Attaching the First Stage to a Cylinder Valve (DIN)



**WARNING: OPEN VALVES SLOWLY TO AVOID OVER-PRESSURISATION.** When pressurising your SCUBA system, be sure to open the cylinder valve slowly to minimise the generation of heat. Failure to do so, with Enriched Air Nitrox (EAN) present, increases the risk of combustion that can lead to serious injury or death.



It is considered safe practice, especially when using EAN, to open the cylinder valve slowly and let the first stage pressurise slowly. Rapid pressurisation causes adiabatic compression of the breathing gas, which generates heat inside the first stage. Heat, along with elevated percentages of oxygen and an ignition source (from contamination) are the ingredients that can cause combustion. This is why it is necessary to keep the interior of the regulator clean and the percentage of oxygen below 40% along with the slow opening of the valve.



**CAUTION!** Use a small amount of an appropriate lubricant (such as Christo-Lube) LIGHTLY applied to the thread of the Din Hand Wheel periodically. This prevents seizing on the Cylinder Valve. **DO NOT OVER LUBRICATE** or apply to the internals of the handwheel or cylinder valve gas-way.

To attach a DIN-style first stage to the cylinder valve, follow these steps:

1. Remove the protector cap from the cylinder valve, if fitted. With the cylinder valve facing away from you, release a small amount of air from the cylinder by turning the hand wheel anti-clockwise to open the valve slightly. When air is heard exiting, immediately close the valve. This will clear any moisture or debris that may be inside the threaded cylinder valve opening.
2. Position the first stage near the cylinder valve so that the LP hose of the primary second stage will be routed over the desired shoulder. Thread the first stage DIN connector into the cylinder valve and turn the hand wheel until hand tight only. **DO NOT** use tools to tighten.



3. If a submersible pressure gauge is attached to the first stage, ensure that the gauge is facing away from you. Pressurise the regulator by slowly opening the cylinder valve hand wheel. Continue to turn the cylinder valve hand wheel until fully open, and then back 1/2 turn.
4. Listen near the first stage to check for any leakage. If leakage is detected, immerse the first stage in water while pressurised to determine the source.
5. If leakage has been detected, follow the procedure for removing the regulator from the cylinder valve on page 28. If air was leaking between the first stage and cylinder valve, replace or re-seat the cylinder valve O-ring as needed and repeat the above procedure. If leakage persists, return the cylinder and regulator to an authorised dealer.



### DIN to Yoke Converter

For regulators which may be used back and forth between Yoke and DIN connections, Apex offers a convenient DIN to Yoke converter. First, obtain factory prescribed installation of the DIN connector through an authorised dealer. Then, simply attach the converter to connect your regulator to a yoke valve.



**WARNING:** *Adaptors from yoke 1st stage to a DIN cylinder valve must never be used. This would allow a greater working pressure to be used than the yoke connector is designed to take.*



## Diving With Your Regulator

Before each use, it is important to perform a complete pre-dive inspection of your regulator. NEVER dive with a regulator that shows signs of damage or unsatisfactory performance until it has received complete inspection and service from an authorised dealer.

### Pre-Dive Inspection Checklist:

1. Carefully inspect all hoses at their fittings to ensure they are securely connected into their respective ports on the first stage. Inspect the length of each hose to ensure the hoses are not blistered, cut, or otherwise damaged. If hose protectors are present, slide the protectors back to expose the hose fittings, and inspect the hoses as above.
2. Visually inspect both the first and second stage regulators for any signs of external damage.
3. Environmentally sealed first stages only: Closely inspect the external sealing diaphragm for any signs of damage or deterioration that may cause leakage. Check to ensure that the retainer which holds the external diaphragm in place is tightly secured. Where fitted with a protective jacket ensure that there is no debris blocking the holes through to the sealing diaphragm.



**WARNING:** *If the external diaphragm shows any signs of damage or neglect, DO NOT attempt to dive with the regulator until it has received a factory prescribed service from an authorised dealer. The regulator's performance may be compromised, and first stage freeze-up could occur in cold water conditions.*

4. Connect the first stage regulator to a fully charged SCUBA cylinder. **(For mounting instructions, read the Setup section on pages 21-24.)** SLOWLY open the cylinder valve to pressurise the regulator. Continue turning the valve anti-clockwise until it stops and then turn back 1/2 turn. This is to ensure that the valve is completely open but still free to turn.
5. If present, turn the inhalation control knob completely "out" (anti-clockwise), and then back "in" (clockwise) until the regulator provides maximum ease of breathing with no leakage present. Do not apply excessive pressure.



6. With the IVS/RVS lever (if fitted) set to (–) depress the purge button momentarily to blow out any dust or debris which may have entered the second stage. Release the purge button and listen to ensure that the second stage does not continue to flow any air after the purge button is released.
7. Inhale slowly and deeply from the regulator several times. The regulator must deliver enough air for you to breathe easily without noticeable resistance.
8. Check to ensure that the submersible pressure gauge is displaying an accurate measurement of the air pressure inside the cylinder.
9. Check to ensure that the IVS/RVS control switch (if fitted) is set to "MIN" (–). If present, gently turn the inhalation control knob completely "in" (clockwise), only until it stops. Do not apply excessive pressure. These settings will help to minimise any loss of your air supply during entry or while making a long surface swim. Adjustments can be made below the surface.

## **During the Dive**

When you are ready to submerge, place the second stage in your mouth and set the IVS/RVS switch (if fitted) to your desired position. If present, turn the inhalation control knob out (anti-clockwise) until the regulator breathes comfortably without leaking or being undesirably sensitive.

As you descend, you may want to turn the inhalation control knob further out to make breathing easier. This will be particularly true on deep dives where the air density increases.



The second stage incorporates a deflector to minimise the effects of strong currents on the diaphragm, however, if you swim underwater in an upside down or sideways position, or facing a strong current, you can turn the inhalation control knob back “in” (clockwise), to desensitise the opening effort to prevent any freeflow.

At the end of your dive, be sure to return the IVS/RVS switch (if fitted) to the MIN (–) position, and turn the inhalation control knob “in” when you have arrived at the surface.



***WARNING: Deep diving requires special training and equipment, and greatly increases your risk of decompression sickness and other serious diving injuries. If you attempt to dive beyond prescribed no-decompression limits without first obtaining sanctioned technical dive training, you risk serious injury and death.***

### **Diving In Cold Water**

The C.E.N. standard defines cold water as 10°C (50°F) or lower. In such conditions, there is a risk of freeze-up; particularly in fresh water, which has a higher freezing point and more severe thermoclines. Incidents of first or second stage freeze-up usually result in freeflow from the second stage, resulting in a rapid loss of air.

Before attempting an unsupervised dive in cold water conditions, it is important for you and your buddy to obtain certified training in cold water diving techniques, and to use only equipment which has been specifically designed and maintained for such use. If these precautions are not taken, freeze-up can occur. Any equipment marked with the greater than 10°Celsius symbol; (>10°C) are only suitable for water temperatures above 10°C or 50°F.



It is possible for icing or freeze-up to occur, even with a regulator that has been specially designed for cold water use. It is therefore imperative to practice the correct cold water diving procedures, and take special precautions to prevent second stage icing. This training must include procedures for dealing with regulator freeze-up, unexpected freeflow, and emergency out-of-air situations. These procedures are taught in cold water training programs provided by most recognised certification agencies.

The following measures will further reduce the risk of freeze-up:

1. Request verification from your dive store that the air in your cylinder(s) is dry. It should have a dew point below  $-54^{\circ}\text{C}$  or  $-82^{\circ}\text{F}$ . Excess water vapor can freeze, causing a freeflow condition, or blocking the flow of air entirely.
2. Protect your regulator from any contact with water until the moment that you are ready to begin your dive.
3. Protect your equipment from cold temperatures before the dive. Keep your regulator and all its accessories in a warm, dry place.
4. Avoid breathing through the regulator or pressing the purge button in very cold air before entering the water.
5. Avoid removing the regulator from your mouth during the dive. This will prevent cold water from entering the regulator's second stage.
6. As far as is possible, avoid heavy exertion during the dive in order to minimise the volume of air flowing through the regulator. Ensure the IVS/RVS lever (if fitted) is set to plus (+) position while diving. Avoid discharges of air on the surface. Do not continually press the purge button.
7. Do not practice buddy breathing etc. Keep your regulator in your mouth. In an emergency offer or take a spare regulator.



**WARNING: SCUBA regulators and equipment have operational limits when used in water colder than  $10^{\circ}\text{C}$  ( $50^{\circ}\text{F}$ ). If you attempt to dive in cold water without first obtaining the necessary training and preparation of your equipment, you risk serious injury or death.**



## After The Dive



**NOTE:** Rinse your regulator completely in fresh water before depressurising it, and thoroughly dry the first stage and cylinder valve. This will help to prevent any contaminants from entering the regulator when it is removed from the cylinder.

### Removing the Regulator from the Cylinder Valve (Yoke Connector)

1. Shut off the cylinder air supply by turning the cylinder valve hand wheel clockwise until it stops.
2. While observing the submersible pressure gauge, depress the purge button of the second stage. When the gauge reads zero and airflow cannot be heard from the second stage, release the purge button.
3. Turn the yoke screw anti-clockwise to loosen and remove the first stage from the cylinder valve.
4. Dry the dust cap with a clean towel, or with low pressure air.
5. Place the dust cap over the first stage inlet fitting and seal it securely in place by tightening down the yoke screw.

### Removing the Regulator from the Cylinder Valve (DIN Connector)

1. Turn off the cylinder air supply by turning the cylinder valve hand wheel clockwise until it stops.
2. While observing the submersible pressure gauge, depress the purge button of the second stage. When the gauge reads zero and airflow cannot be heard from the second stage, release the purge button.
3. Turn the first stage hand wheel anti-clockwise to loosen and remove the first stage from the cylinder valve.
4. Blow out any water inside the protector cap or wipe it out with a soft cloth, and wipe the threads of the first stage connector clean and dry. Install the cap over the threads of the first stage connector.



**CAUTION!** Be careful when removing the first stage from the cylinder valve to ensure that moisture does not enter either the inlet opening of the first stage or the opening of the DIN valve.



5. With the cylinder valve facing away from you, open the valve slightly to release a short burst of air, and then immediately close the valve. This will clear any moisture that may have entered the valve opening. Immediately seal the protector cap securely in place over the opening of the DIN valve to prevent the entrance of moisture or debris.

## Care & Maintenance

It is important to provide the proper preventative maintenance in order to ensure the best possible performance and maximum life of your Apeks Regulator. The following maintenance procedures should be performed routinely after each use to ensure that the regulator is cleaned, inspected and prepared for the next use or for storage.

1. Whenever the regulator is removed from the cylinder valve, it is important to wipe or blow the dust cap completely dry, and then fasten it securely over the first stage inlet fitting. This is critical to prevent the entrance of moisture into the first stage.
2. As soon as possible after diving, the regulator should be rinsed thoroughly with fresh water while it is attached to a cylinder and pressurised with air.
3. Rinsing alone, however, will not sufficiently clean the regulator. To clean the regulator as thoroughly as possible, it is necessary to soak it in warm (not over 50°C / 120°F) fresh tap water for at least one hour.
- a. The preferred method is to attach the regulator to a charged SCUBA cylinder, open the cylinder valve to pressurise the regulator, and thoroughly soak both the first and second stages. Pressurising the regulator will effectively prevent the entrance of moisture and/or contaminants into the regulator while it soaks.



- b. If it is not feasible to soak the regulator while it is attached to a cylinder, it may be soaked unpressurised – provided that the dust cap is securely sealed over the inlet, and the second stage purge buttons are not depressed while the regulator is submerged or wet.



**NOTE:** When soaking or rinsing an adjustable model regulator unpressurised, check to ensure that the second stage inhalation control knob is turned completely “in” (clockwise) to prevent moisture from entering the valve and LP hose.



**CAUTION!** DO NOT loosen the first stage yoke screw, depress the second stage purge button, or turn out the inhalation control knob (if present) if the regulator is submerged unpressurised. Doing so will allow the entrance of moisture, and will require that the regulator be returned to an authorised dealer for service.

4. While the regulator is soaking, move the IVS/RVS control switch (if present) back and forth several times from the “MIN” (–) to the “MAX” (+) settings. You may also turn the inhalation control knob slightly back and forth—no more than 4 turns. This action will help to loosen any salt or mineral deposits that may remain lodged in the second stage.
5. After the regulator has been properly soaked, it is important to rinse it vigorously by flushing the first stage ambient chamber (non-environmentally sealed models only), the second stage mouthpiece, and the openings in the second stage front cover with a pressurised stream of water. This will remove any deposits of salt and minerals that were loosened during soaking. If the regulator is not pressurised, do not press the purge button underwater. Moisture may otherwise enter the valves, which will require that the regulator be returned to an authorised dealer for service.
6. Wipe the regulator as dry as possible and hang by the first stage to ensure that all remaining moisture drains from the second stages.
7. Adjustable models should be stored with the inhalation control knob turned all the way out (anti-clockwise), away from the regulator body. This will help to extend the life of the low pressure seat.
8. When the regulator is completely dry, store it in a clean box or sealed inside a plastic bag. Do not store it where it may be exposed to extreme heat or an electric motor which produces ozone. Prolonged exposure to extreme heat, ozone, chlorine and ultraviolet rays can



cause premature degradation of rubber parts and components.

9. Never store the regulator while it is connected to the cylinder valve.
10. Do not use any type of solvent or petroleum based substances to clean or lubricate any part of the regulator. Do not expose any part of the regulator to aerosol spray, as some aerosol propellants attack or degrade rubber and plastic materials.

## **Dealer Service & Repair**

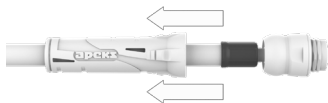
1. It cannot be assumed that a regulator is in good working order on the basis that it has received little use since it was last serviced. Remember that prolonged or improper storage can still result in internal corrosion and/or deterioration of O-ring seals.
2. You must obtain factory prescribed service for your regulator at least once a year from an authorised dealer, regardless of the amount of use it has received. Your regulator may require this service more frequently, depending on the amount of use it receives and the environmental conditions in which it is used.
3. If the regulator is used for rental or training purposes, it will require complete overhaul and factory prescribed service every three to six months or 50 hours continual use. Chlorinated swimming pool water is an especially damaging environment for SCUBA equipment, due to the high levels of chlorine and pH balancing chemicals which cause certain components to rapidly deteriorate.
4. DO NOT attempt to perform any disassembly or service of your regulator. Doing so may cause the regulator to malfunction, and will render the Apeks warranty null and void. All service must be performed by an authorised dealer.



## Cleaning The Swivel Joint



(1) Slide back the hose protector highlighted in grey on the left.



(2) Slide back the hose protector fully revealing the hose ferrule beneath highlighted in grey.



(3) Thoroughly rinse the assembly all around with fresh water.



**CAUTION!** Do not use detergents or solvents to clean the swivel joint as this could damage the swivel components and o-rings.



(4) Push the hose protector back in place so that the cup sits tightly on the ball joint cap highlighted in grey.





## Removal of The Swivel Joint



(1) To remove the swivel assembly from the second stage, first apply an 11/16" open ended spanner to the nut flats on the second stage heat exchanger.



(2) Apply additional 11/16" open ended spanner to the nut flats on the swivel assembly. Loosen hose connection carefully ensuring not to rotate heat exchanger and spindle assembly inside second stage.



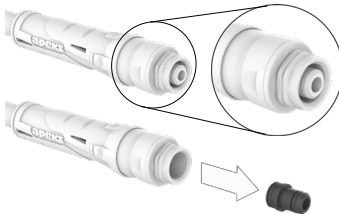
**WARNING:** It is important to ensure that the hose is loosened while holding the heat exchanger. If not done the spindle may turn in the regulator case, causing serious malfunction.



**NOTE:** It is not necessary to use a second spanner to hold the heat exchanger on EVX models.



(3) Once the hose nut has been completely loosened, the swivel hose assembly can be removed from the second stage.



(4) The swivel connector can be removed from the ball joint while cleaning.



**WARNING:** It is important to ensure that the connector is re-fitted on re-connecting the hose to the second stage.



## Removal of Standard Medium Pressure Hoses



(1) To remove the hose assembly from the second stage, first apply an 11/16" open ended spanner to the nut flats on the second stage heat exchanger.



(2) Apply additional 11/16" open ended spanner to the nut flats on the hose nut. Loosen hose connection carefully ensuring not to rotate heat exchanger and spindle assembly inside second stage.



**WARNING:** It is important to ensure that the hose is loosened while holding the heat exchanger. If not done the spindle may turn in the regulator case, causing serious malfunction.



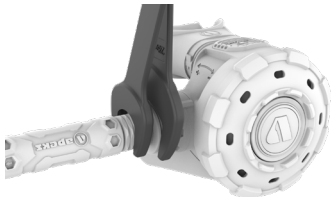
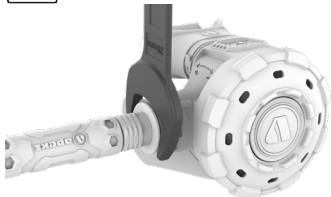
**NOTE:** It is not necessary to use a second spanner to hold the heat exchanger on EVX models.



(3) Once the hose nut has been completely loosened, the hose assembly can be removed from the second stage.



**CAUTION!** When removing hose assembly from MTX second stages, apply a 28mm open ended spanner to the nut flats of the second stage heat exchanger.



## Fitting of The Swivel Joint



(1) Offer swivel hose assembly up to second stage spindle, turning the hose nut by hand paying attention not to cross thread.



**WARNING:** *It is important to ensure that the connector is re-fitted on re-connecting the hose to the second stage, if removed during disassembly.*



(2) To tighten swivel hose nut to the second stage spindle, first apply an 11/16" open ended spanner to the nut flats of the second stage heat exchanger.



**NOTE:** It is not necessary to use a second spanner to hold the heat exchanger on EVX models.



(3) Once the hose nut has been fitted by hand, tighten if possible using an 11/16" crowfoot torque wrench to 5Nm ensuring not to rotate heat exchanger and spindle assembly inside second stage.



**WARNING:** *It is important to ensure that the hose is tightened while holding the heat exchanger. If not done the spindle may turn in the regulator case, causing serious malfunction.*



## Fitting of Standard Medium Pressure Hoses



(1) Offer hose assembly up to second stage spindle, turning the hose nut by hand paying attention not to cross thread.



(2) To tighten hose nut to the second stage spindle, first apply an 11/16" open ended spanner to the nut flats of the second stage heat exchanger.



**NOTE:** It is not necessary to use a second spanner to hold the heat exchanger on EVX models.



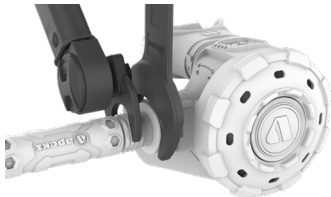
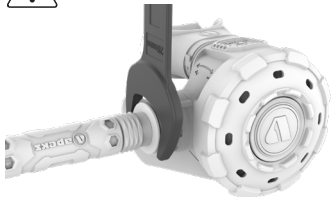
(3) Once the hose nut has been fitted by hand, tighten if possible using an 11/16" crowfoot torque wrench to 5Nm ensuring not to rotate heat exchanger and spindle assembly inside second stage.



**WARNING:** It is important to ensure that the hose is tightened while holding the heat exchanger. If not done the spindle may turn in the regulator case, causing serious malfunction.



**CAUTION!** When fitting hose onto MTX second stages, apply a 28mm open ended spanner to the nut flats of the second stage heat exchanger.





## Warranty Information

The Customer benefits a warranty of conformity in relation to the Products delivered by AQUALUNG during two (2) years from the date of delivery, except if otherwise mentioned on the user/owner's manual of the product.

According to this warranty, AQUALUNG is liable for (i) any lack of conformity existing at the time of delivery of the Products and (ii) any lack of conformity resulting from the packaging, assembly instructions or, as the case may be, installation if this has been entrusted to the Customer or has been carried out under his responsibility.

This conformity warranty shall not apply (i) if the Customer was aware of the defect at the time of contracting, (ii) when he could not have been unaware of the defect at the time of contracting or (iii) where the defect is the result of materials supplied by the Customer.

In the event of lack of conformity, AQUALUNG shall offer the Customer either the replacement of the Products or their repair depending on the choice made by the Customer, unless the cost to AQUALUNG is clearly disproportionate, taking into account the value of the Products or the significance of the defect.

The Customer may return the Product and have the price refunded by AQUALUNG or keep the Product and have part of the price refunded by AQUALUNG (i) if repair and replacement of the Product is impossible or without major inconvenience (ii) or could not be carried out within one (1) month following the Customer's request.

The Customer benefits a warranty against hidden defects in relation to the Products delivered by AQUALUNG during two (2) years from the discovery of the defect, within the five (5) years following the purchase date, except if otherwise mentioned on the user/owner's manual of the product. The Customer shall prove that the defect existed at the time of purchase, that it was hidden and that it renders the Product unusable.

If these conditions are met, the Customer may return the Product and have the price refunded by AQUALUNG or keep the Product and have part of the price refunded by AQUALUNG.



For the application of the aforementioned warranties, the Customer shall return the Products to AQUALUNG in the state in which the Customer has received them with all their accessories and documents, as well as a copy of the invoice.

No charge shall be requested by AQUALUNG to the Customer for the replacement or repair of the Products for the purpose of the aforementioned warranties.

These warranties do not cover damage and wear resulting from adaptation or a special assembly, whether it is abnormal or not, of the Products. Defects and deterioration of the Products resulting from abnormal conditions of storage and/or conservation by the Customer cannot be covered by these warranties.



***WARNING: It is dangerous for untrained and uncertified persons to use the equipment covered by this warranty. Use of this equipment by an untrained person would void any warranties. Use of SCUBA equipment by anyone who is not a trained or certified diver, or receiving training under the supervision of an instructor, could lead to serious injury or death.***

## **Returning Your Regulator For Service**

Whenever your regulator requires annual service or warranty consideration, Apeks requires that you take it or send it to an authorised Apeks dealer. It is important that you provide the dealer with a copy of your sales receipt and your Annual Service & Inspection Record located in the back of this booklet. For help in finding a dealer in your area, please contact your local distributor. Your distributor details can be found on our website [www.apeksgiving.com](http://www.apeksgiving.com)



## Markings and Abbreviations

Demand regulators which are not designed for cold water use are marked with '>10°C' on both the Second Stage Demand Valve and First Stage Pressure Reducer. Demand valves which are intended to be used with an Octopus, shall be marked with EN250 followed by an 'A'. EN250A.

If a demand valve is marked with EN250A, this demand regulator is suitable, tested and intended to be used in water temperatures below 10°C (50°F) and configured with an Octopus.

If a demand regulator is marked with EN250A >10°C, this demand valve is suitable, tested and intended to be used in water temperatures above 10°C (50°F) and configured with an Octopus. If a demand valve is only marked with EN250 and not followed by an 'A', then it will not be suitable for use with an Octopus and is not intended for use as an escape device by more than one user at the same time, also known as an Octopus.

You will also see the CE and UKCA markings. These denote the identification number of the Notified body who has independently certified and examined your product.

A serial number can also be found, usually comprising of eight characters, on both the first stage pressure reducer and second stage demand valve. A hose can also be marked with the maximum working pressure of that particular type of hose, EN250 and can also include a serial number specific to that hose.

If an Apeks regulator is configured for and used by more than one diver at the same time, then it shall not be used at depths greater than 30 m and in water temperatures less than 4 °C.

If an MTX regulator is configured for and used by more than one diver at the same time, then it shall not be used at depths greater than 50 m and in water temperatures less than 4 °C.



## Annex A: Enriched Air Nitrox Use (EAN)



**WARNING:** *This chapter contains important information concerning use with oxygen-enriched air (Nitrox/EAN). Do not attempt to use this product with enriched air without having entirely read and understood this chapter. If you do not do this, you risk serious injury or death.*



**WARNING:** *Obtain Nitrox Diving Certification. In order to gain a complete appreciation of the advantages of diving with Nitrox, it is ABSOLUTELY NECESSARY that you undergo special training and obtain certification in Nitrox diving from a recognised training agency. The depth and time limit of the dive depends on the oxygen content of the Nitrox mixture.*



**WARNING:** *The maximum operating depth of your regulator and exposure times are dependent on the oxygen content of the gas you are using.*

### Enriched Air Nitrox Use - Inside EEC (European Economic Community ) countries EN 144-3 and EN13949

In CEE countries, diving with Nitrox/O<sub>2</sub> is controlled by Standards EN 144-3 – Respiratory protective devices - Gas cylinder valves - Part 3: Outlet connections for diving gases Nitrox and oxygen - and EN13949 – Respiratory equipment - Open circuit self-contained diving apparatus for use with compressed Nitrox and oxygen - requirements, testing, marking.



**NOTE:** The maximum depth of the dive is determined by the type of mixture used.



**NOTE:** Apeks offers a range of regulators designed and manufactured specially for use with oxygen-enriched mixtures, over 21% and up to 100% oxygen. This range has been certified according to the EN144-3 and EN13949 standards and meets the requirements of the adiabatic compression tests. They have received CE certification for this type. For further information on this range, contact your Apeks specialist centre.



**WARNING:** *These regulators fitted with special connections should be used only with complementary equipment (tank valves, tanks, pressure gauges, etc.) designed and prepared for use with an oxygen-enriched mixture. These items are marked Nitrox/O<sub>2</sub>.*



**WARNING:** *If the regulator that you use is fitted with a yoke or DIN connection, it is designed for use only with compressed breathing air (21% oxygen and 79% nitrogen) which meets the EN12021 standard. DO NOT USE this equipment with other mixtures or with gases containing more than 21% oxygen. Disregarding this rule could result in serious injury or death caused by fire or explosion.*

Every Nitrox/O<sub>2</sub> regulator is assembled in a clean workshop, using compatible components and special lubricants. It is important to maintain the interior of the regulator in a clean state. Breathing air used in the production of a mixture should be oxygen compatible and double filtered with a hydrocarbon content not greater than 0.1 mg/m<sup>3</sup>. Your Apeks technical specialist should be able to help you determine if the breathing air he supplied meets these criteria.



**NOTE:** For further details on part numbering, please refer to the table at the rear of this manual (Annex B).

## **Enriched Air Nitrox Use – Outside EEC (European Economic Community) Countries**

Your Apeks regulator has been prepared for use with Enriched Air Nitrox (EAN) where the percentage of oxygen in the EAN does not exceed 40%. This is possible because each regulator is built to a high standard of cleanliness using EAN compatible components and lubricants. In addition, each regulator design has passed stringent adiabatic compression testing to ensure its safety and compatibility with increased percentages of oxygen.

If it is your intention to use your new Apeks regulator with Nitrox EAN (O<sub>2</sub> not to exceed 40%), it is imperative that you maintain the internal



cleanliness of the regulator (see section on Care and Maintenance). If it is your intention to use the regulator interchangeably with breathing air, the breathing air should be oxygen-compatible or “hyperfiltered” where the condensed hydrocarbons do not exceed 0.1 mg/m<sup>3</sup>. Your local authorised Apeks dealer can help you determine whether the breathing air that they provide meets this criterion.

Standard compressed breathing air meeting the EN12021 standard, often referred to as Grade E in the United States, does not necessarily meet this criterion. Grade E or EN12021 breathing air may contain a certain level of hydrocarbons, including traces of compressor oils that while not considered harmful to breathe, can pose a risk in the presence of elevated oxygen content. Passing hydrocarbons through a valve and regulator creates a cumulative effect where the hydrocarbons build up over time along the internal passageways of the equipment. When these hydrocarbons come into contact with high-pressure oxygen enriched air, they can pose a very real hazard that can lead to combustion. Therefore, if a regulator has been used with Grade E or EN12021 breathing air, it should be returned to an authorised Apeks dealer for overhaul service including oxygen cleaning, prior to being put back into nitrox service. Although second stage components are not exposed to high pressure EAN, Apeks recommends that the same cleaning procedures be followed for the complete regulator. This prevents the possibility of cross contamination and guarantees the cleanliness of the entire regulator.



**NOTE:** For further details on part numbering, please refer to the table at the rear of this manual (Annex B).



## Annex B: Products Covered by This Manual.

TX Products				
Part Number	Description	Common Part Number (CPN)	N2O	O2
AP0530-1AQG	TX100 REG DIN AQG	RG111111	-	-
AP0530-1FFM	TX100 REG DIN FFM	-	-	-
AP0500-1AQG	TX50 DIN 4 X 3/8 1MT HOSE	RG115131	-	-
AP0069	FFM REG XTX100/TX100	-	-	-
NM0526	NON MAG DIN REGULATOR	-	-	-

AT / ATX Products				
Part Number	Description	Common Part Number (CPN)	N2O	O2
AP0588C/US4	AT STAGE 3 YOKE	RQ111112	-	-
AP0588C-1/US4	AT STAGE 3 DIN	RQ111111	-	-
AP0545C/US4	AT REG YOKE	RG116111	-	-
AP0545C-1/US4	AT REG DIN	RG116112	-	-
AP0540C/DS4	ATX REG YOKE	RG117111	-	-
AP0540C-1/DS4	ATX REG DIN	RG117112	-	-
AP0589C-1/DS4	ATX STAGE 3 DIN	RQ112111	-	-
AP0589C/DS4	ATX STAGE 3 YOKE	RQ112112	-	-

XTX 200 TUNGSTEN / XTX 200 Products				
Part Number	Description	Common Part Number (CPN)	N2O	O2
AP0335F5BAG	TUNGSTEN REG 5SPORT WBAG	RG113142	-	-
AP0336F5BAG	TUNGSTEN REG DIN 5SPORT WBAG	RG113143	-	-
AP0336F5	TUNGSTEN REG DIN	RG113137	-	-
AP0336F5GIANT	TUNGSTEN REG DIN + 2ND	RG113141	-	-
AP0336F5J	TUNGSTEN REG DIN SWIVEL	RG113139	-	-
AP0335F5	TUNGSTEN REG YOKE	RG113136	-	-
AP0335F5GIANT	TUNGSTEN REG YOKE + 2ND	RG113140	-	-
AP0335F5J	TUNGSTEN REG YOKE SWIVEL	RG113138	-	-



AP0328F5	TUNGSTEN STAGE3 DIN	RQ125129	-	-
AP0327F5	TUNGSTEN STAGE3 YOKE	RQ125128	-	-
AP0327F5BAG	TUNGSTEN 5PORT WBAG	RQ125131	-	-
AP0328F5BAG	TUNGSTEN STAGE3 DIN 5PORT WBAG	RQ125132	-	-
NP0334FH	XTX200 NITROX REG M26	RG113113	-	-
AP0334F-1	XTX200 REG DIN	RG113122	-	-
AP0334F-1GIANT	XTX200 REG DIN + 2nd STG	RG113116	-	-
AP0334F-1/J	XTX200 REG DIN SWIVEL	RG113118	-	-
AP0334F	XTX200 REG YOKE	RG113121	-	-
AP0334FGIANT	XTX200 REG YOKE + 2ND	RG113115	-	-
AP0334F/J	XTX200 REG YOKE SWIVEL	RG113123	-	-
AP0325F-1	XTX200+40 STAGE3 DIN	RQ125124	-	-
AP0325F	XTX200+40 STAGE3 YOKE	RQ125116	-	-
AP0326F-1	XTX200+50 STAGE3 DIN	RQ125126	-	-
AP0326F	XTX200+50 STAGE3 YOKE	RQ125118	-	-

### XTX 100 Products

<i>Part Number</i>	<i>Description</i>	<i>Common Part Number (CPN)</i>	<i>N2O</i>	<i>O2</i>
AP0333F-1AA	XTX100 REG DIN USA	RG111115	-	-
AP0333F	XTX100 REGULATOR DIN	RG111116	-	-
AP0333F-1	XTX100 REGULATOR DIN	RG111117	-	-
AP0333FAA	XTX100 REGULATOR USA	RG111118	-	-
NP0333F-1	XTX100 NITROX REG DIN	RG111112	✓	-
NP0333FH	XTX100 NITROX REG M26	RG111113	✓	-

### XTX 50 Products

<i>Part Number</i>	<i>Description</i>	<i>Common Part Number (CPN)</i>	<i>N2O</i>	<i>O2</i>
AP0332F-1/DS4	XTX50 DS4 REG DIN	RG115125	-	-
AP0332F/DS4	XTX50 DS4 REG YOKE	RG115126	-	-
NP0332F-1	XTX50 NITROX REG DIN	RG115112	✓	-
NP0332FH	XTX50 NITROX REG M26	RG115113	✓	-



AP0332FGIANT	XTX50 REG + 2nd STAGE	RG115115	-	-
AP0332F-1	XTX50 REG DIN	RG115128	-	-
AP0332F-1GIANT	XTX50 REG DIN + 2nd STG	RG115116	-	-
AP0332F-1/5A	XTX50 REG DIN 5 PORT	RG115135	-	-
AP0332F-1/5	XTX50 REG DIN 5PORT	RG115117	-	-
AP0332F	XTX50 REG YOKE	RG115127	-	-
AP0100F	XTX50 SIDE MOUNT SET	RP111121	-	-
AP0100F/IMP	XTX50 SIDE MOUNT SET IMP	RP111122	-	-
AP0317F-1	XTX50+40 STAGE3 DIN	RQ129119	-	-
AP0317F	XTX50+40 STAGE3 YOKE	RQ129114	-	-
AP0318F-1	XTX50+50 STAGE3 DIN	RQ129121	-	-
AP0318F	XTX50+50 STAGE3 YOKE	RQ129115	-	-
AP0332F-1/5	XTX50_REG_DIN 5 PORT	RG115117	-	-
AP0332F-1D4O2	XTX50_DS4_REG_DIN_O2	RG115119	-	-
AP0332F-1O2	XTX_REG_DIN_O2	RG115122	✓	✓
AP0332F-1O2A	XTX_REG_DIN_O2	RG115133	✓	✓

### XTX 40 Products

<i>Part Number</i>	<i>Description</i>	<i>Common Part Number (CPN)</i>	<i>N2O</i>	<i>O2</i>
NP0331F-1/DS4	XTX40 DS4 NITROX REG DIN	RG114113	✓	-
NP0331FH/DS4	XTX40 DS4 NITROX REG M26	RG114116	✓	-
AP0331F-1/DS4	XTX40 DS4 REG DIN	RG114119	-	-
AP0331F/DS4	XTX40 DS4 REG YOKE	RG114121	-	-
NP0331F-1	XTX40 NITROX REG DIN	RG114112	✓	-
NP0331FH	XTX40 NITROX REG M26	RG114115	✓	-
AP0331F-1	XTX40 REG DIN	RG114123	-	-
AP0331F	XTX40 REG YOKE	RG114122	-	-
AP0314F-1	XTX40 STAGE3 DIN	RQ128113	-	-
AP0314F	XTX40 STAGE3 YOKE	RQ128116	-	-

**TEK Set Products**

<i>Part Number</i>	<i>Description</i>	<i>Common Part Number (CPN)</i>	<i>N2O</i>	<i>O2</i>
AP0332F-1-SETA	TEK SET	RP112113	-	-
AP0050	TEK SET + GAUGE	RC112115	-	-
AP0051	TEK SET + GAUGE IMP	RC112116	-	-
AP0367F-1	TEK3 LH + RH 1st STAGES	RT133113	-	-

**MTX Products**

<i>Part Number</i>	<i>Description</i>	<i>Common Part Number (CPN)</i>	<i>N2O</i>	<i>O2</i>
AP0052GRY	SINGLE CYL MTX-RC SET	RC128000	-	-
AP0052GRYIMP	SINGLE CYL MTX-RC SET IMP	RC128001	-	-
AP0058	50TH ANNIVERSARY YOKE	RG122134	-	-
AP0059	50TH ANNIVERSARY DIN	RG122133	-	-
AP0060	MTX-R REGULATOR YOKE	RG122112	-	-
AP0060C	MTX-R REG YOKE CONTROL	RG122113	-	-
AP0060CGIANT	MTX-RC REG YOKE + 2ND	RG122128	-	-
AP0060CSGRY	MTX-RC REG GREY	RG122129	-	-
AP0060CSGRYGIA	MTX-RC REG GRY + 2ND STG	RG122131	-	-
AP0060V	MTX-R REG VENTURI	RG122114	-	-
AP0061	MTX-R REG DIN	RG122111	-	-
AP0061C	MTX-R REG DIN CONTROL	RG122115	-	-
AP0061CGIANT	MTX-RC REG DIN + 2ND STG	-	-	-
AP0061CSGRY	MTX-RC REG DIN GREY	RG122130	-	-
AP0060CSGRYGIA	MTX-RC REG GRY + 2ND STG	RG122131	-	-
AP0061V	MTX-R REG DIN VENTURI	RG122116	-	-
AP0067	MTX-R STAGE 3 YOKE	RQ115111	-	-
AP0067C	MTX-R STAGE 3 'C' YOKE	RQ115112	-	-
AP0067CVSGRY	MTX-RC STAGE 3 GREY YOKE	RQ115117	-	-
AP0067V	MTX-R STAGE 3 'V' YOKE	RQ115113	-	-
AP0068	MTX-R STAGE 3 DIN	RQ115114	-	-



AP0068C	MTX-R STAGE 3 DIN 'C'	RQ115115	-	-
AP0068CVSGRY	MTX-RC STAGE 3 DIN GREY	RQ115118	-	-
AP0068V	MTX-R STAGE 3 DIN 'V'	RQ115116	-	-
AP0100MTXR	MTX-R SIDEMOUNT SET	RP111111	-	-
AP0100MTXRIMP	MTX-R SIDEMOUNT SET IMP	RP111112	-	-
AP0286	MTX REG BLACK YOKE	-	-	-
AP0286V	MTX REG YOKE BLACK 'V'	-	-	-
AP0286S	MTX REG YOKE SATIN	-	-	-
AP0286VS	MTX VENTURI SAT YOKE REG	-	-	-
AP0286AQ	MTX REG YOKE AQ	MD139118	-	-
AP0286BCPAQ	MTX REG YOKE BCP AQ	MD139117	-	-
AP0286CS1MTR	MTX YOKE FN CONTROL	MD139119	-	-
AP0287	MTX REG BLACK DIN	-	-	-
AP0287V	MTX REG BLACK DIN VENTURI	-	-	-
AP0287S	MTX REG SATIN DIN	-	-	-
AP0287VS	MTX VENTURI SAT DIN REG	-	-	-
AP0287AQ	MTX BLACK DIN REG AQ	MD127112	-	-
AP0287BCPAQ	MTX BCP DIN REG AQ	MD127111	-	-
AP0287CS1MTR	MTX DIN FN CONTROL	MD139120	-	-

## XL4 Products

Part Number	Description	Common Part Number (CPN)	N2O	O2
AP0910	XL4 REGULATOR YOKE	RG124111	-	-
AP0911	XL4 REGULATOR DIN	RG124112	-	-
AP0917	XL4 STAGE3 SET YOKE	RQ117111	-	-
AP0918	XL4 STAGE3 DIN	RQ117112	-	-
AP0919	XL4 STAGE4 SET YOKE	RC115111	-	-
AP0921	XL4 STAGE4 DIN	RC115113	-	-
NP0911	XL4 NITROX REGULATOR DIN	RG124113	-	✓
NP0911H	XL4 NITROX REGULATOR M26	RG124114	-	✓

**XL4+ Products**

<i>Part Number</i>	<i>Description</i>	<i>Common Part Number (CPN)</i>	<i>N2O</i>	<i>O2</i>
AP0910W	XL4+ REGULATOR YOKE	RG124119	-	-
AP0911W	XL4+ REGULATOR DIN	RG124118	-	-
NM0911GRY	XL4+ NON MAG DIN GREY	NM0911GRY	-	-
AP0989	XL4+ RAPID DIVER	-	-	-
AP0981	XL4+ REGULATOR DIN	RT111121	-	-
AP0986	XL4+ OCTO 2ND STAGE	RS118122	-	-

**XL4 OCEA Products**

<i>Part Number</i>	<i>Description</i>	<i>Common Part Number (CPN)</i>	<i>N2O</i>	<i>O2</i>
AP0960	XL4 OCEA REGULATOR YUCCA	RG124121	-	-
AP0960GRY	XL4 OCEA GREY REGULATOR YOKE	RG124122	-	-
AP0961	XL4 OCEA REGULATOR DIN YUCCA	RG124123	-	-
AP0961GRY	XL4 OCEA GREY REGULATOR DIN	RG124124	-	-
AP0967	XL4 OCEA STAGE 3 SET YUCCA	RQ117115	-	-
AP0967GRY	XL4 OCEA STAGE 3 SET GREY YOKE	RQ117116	-	-
AP0968	XL4 OCEA STAGE 3 SET DIN YUCCA	RQ117117	-	-
AP0968GRY	XL4 OCEA STAGE 3 SET DIN GREY	RQ117118	-	-
AP0984	XL4 OCEA OCTO	-	-	-

**Egress Products**

<i>Part Number</i>	<i>Description</i>	<i>Common Part Number (CPN)</i>	<i>N2O</i>	<i>O2</i>
AP0755	EGRESS 2ND STAGE	-	-	-
AP0755BLK	EGRESS BLACK 2ND STAGE	-	-	-
AP0756	EGRESS WITH HOSE	RS113114	-	-

**EVX Products**

<b>Part Number</b>	<b>Description</b>	<b>Common Part Number (CPN)</b>	<b>N2O</b>	<b>O2</b>
AP01203	EVX TUNGSTEN REG DIN	RG159002	-	-
AP01205	EVX TUNGSTEN REG YOKE	RG159003	-	-
AP01202	EVX200 REG DIN	RG159000	-	-
AP01204	EVX200 REG YOKE	RG159001	-	-
AP01206	EVX 200 DIN STAGE 3	RQ138000	-	-
AP01207	EVX TUNGSTEN DIN STAGE 3	RQ138002	-	-
AP01208	EVX 200 YOKE STAGE 3	RQ138001	-	-
AP01209	EVX TUNGSTEN YOKE STAGE 3	RQ138003	-	-



## NOTES





## NOTES

ipek



## NOTES





## REGULATOR SERVICE RECORD

MODEL: \_\_\_\_\_ DATE PURCHASED: \_\_\_\_\_

DATE SERVICED: \_\_\_\_\_

SERVICED BY: \_\_\_\_\_

PARTS CHANGED: \_\_\_\_\_

DEALER  
STAMP

MODEL: \_\_\_\_\_ DATE PURCHASED: \_\_\_\_\_

DATE SERVICED: \_\_\_\_\_

SERVICED BY: \_\_\_\_\_

PARTS CHANGED: \_\_\_\_\_

DEALER  
STAMP

MODEL: \_\_\_\_\_ DATE PURCHASED: \_\_\_\_\_

DATE SERVICED: \_\_\_\_\_

SERVICED BY: \_\_\_\_\_

PARTS CHANGED: \_\_\_\_\_

DEALER  
STAMP

MODEL: \_\_\_\_\_ DATE PURCHASED: \_\_\_\_\_

DATE SERVICED: \_\_\_\_\_

SERVICED BY: \_\_\_\_\_

PARTS CHANGED: \_\_\_\_\_

DEALER  
STAMP

MODEL: \_\_\_\_\_ DATE PURCHASED: \_\_\_\_\_

DATE SERVICED: \_\_\_\_\_

SERVICED BY: \_\_\_\_\_

PARTS CHANGED: \_\_\_\_\_

DEALER  
STAMP

MODEL: \_\_\_\_\_ DATE PURCHASED: \_\_\_\_\_

DATE SERVICED: \_\_\_\_\_

SERVICED BY: \_\_\_\_\_

PARTS CHANGED: \_\_\_\_\_

DEALER  
STAMP



## REGULATOR SERVICE RECORD

MODEL: \_\_\_\_\_ DATE PURCHASED: \_\_\_\_\_

DATE SERVICED: \_\_\_\_\_

SERVICED BY: \_\_\_\_\_

PARTS CHANGED: \_\_\_\_\_

DEALER  
STAMP

MODEL: \_\_\_\_\_ DATE PURCHASED: \_\_\_\_\_

DATE SERVICED: \_\_\_\_\_

SERVICED BY: \_\_\_\_\_

PARTS CHANGED: \_\_\_\_\_

DEALER  
STAMP

MODEL: \_\_\_\_\_ DATE PURCHASED: \_\_\_\_\_

DATE SERVICED: \_\_\_\_\_

SERVICED BY: \_\_\_\_\_

PARTS CHANGED: \_\_\_\_\_

DEALER  
STAMP

MODEL: \_\_\_\_\_ DATE PURCHASED: \_\_\_\_\_

DATE SERVICED: \_\_\_\_\_

SERVICED BY: \_\_\_\_\_

PARTS CHANGED: \_\_\_\_\_

DEALER  
STAMP

MODEL: \_\_\_\_\_ DATE PURCHASED: \_\_\_\_\_

DATE SERVICED: \_\_\_\_\_

SERVICED BY: \_\_\_\_\_

PARTS CHANGED: \_\_\_\_\_

DEALER  
STAMP

MODEL: \_\_\_\_\_ DATE PURCHASED: \_\_\_\_\_

DATE SERVICED: \_\_\_\_\_

SERVICED BY: \_\_\_\_\_

PARTS CHANGED: \_\_\_\_\_

DEALER  
STAMP



**apeks**

Apeks Marine Equipment  
Neptune Way, Blackburn,  
Lancashire BB1 2BT, England  
Tel: +44 (0) 1254 692200  
Fax: 44 (0) 1254 692211  
Email: [info@aqualung.uk](mailto:info@aqualung.uk)  
[www.apeksdiving.com](http://www.apeksdiving.com)

An **AQUA**  **LUNG** Company